

Stretch



*Copyright 2011 by Elaine Fitzpatrick. Permission is granted to make and sell items from this pattern provided that credit is given to me as the designer. Permission is **not** granted to reproduce the actual pattern, or post it, or distribute it, without my express permission. Please respect my copyright and play nice!*

Size: approximately 9 ½" X 7 ¾".

Materials: One skein of worsted weight cotton in a solid color (approximately 98 yards). The cloth pictured was done in Peaches & Crème in Butterscotch.

Needles: U.S. Size 6/4.0mm or 5/3.75mm Because this is a “picture” cloth, you want your fabric to be fairly dense so the design will pop out. If you are a loose knitter, then you might want to drop down a needle size.

Gauge: 4.5 sts. per inch, not critical.

Abbreviations:

k = knit

p = purl

sts. = stitches

Pattern: Cast on 37 sts.

Rows 1 – 7: (k1, p1) across row.

Row 8: (k1, p1) x4; k1; p5; k1; p10; k1; p2; k1; (p1, k1) x4.

Row 9: (k1, p1) x4; k3; p1; k7; p2; k1; p1; k6; (p1, k1) x4.

Row 10: (k1, p1) x3; k1; p7; k1; p1; k3; (p5, k1) x2; (p1, k1) x3.

Row 11: (k1, p1) x3; (k6, p1) x2; k2; p1; k8; (p1, k1) x3.

Row 12: (k1, p1) x2; k1; p9; k1; p6; k2; p1; k1; p7; k1; (p1, k1) x2.

Row 13: (k1, p1) x2; k8; p1; k2; p2; k5; p1; k10; (p1, k1) x2.

Row 14: (k1, p1) x2; k1; p9; k1; p4; k2; p2; k1; p8; k1; (p1, k1) x2.

Row 15: (k1, p1) x2; k9; p1; k6; p3; k10; (p1, k1) x2.

Row 16: (k1, p1) x2; k1; p9; k2; p6; k1; p9; k1; (p1, k1) x2.

Row 17: (k1, p1) x2; k10; p1; k7; p1; k10; (p1, k1) x2.

Row 18: (k1, p1) x2; k1; p9; (k1, p3) x2; k1; p9; k1; (p1, k1) x2.

Row 19: (k1, p1) x2; k10; p1; k3; p2; k2; p1; k10; (p1, k1) x2.

Row 20: (k1, p1) x2; k1; p9; k1; p2; k3; p2; k1; p9; k1; (p1, k1) x2.

Row 21: (k1, p1) x2; k6; p2; k2; p1; k2; p3; k2; p1; k10; (p1, k1) x2.

Row 22: (k1, p1) x2; k1; p9; k2; p2; k1; p3; k1; p1; k1; p2; k1; p4; k1; (p1, k1) x2.

Row 23: (k1, p1) x2; (k4, p1) x2; k6; p3; k10; (p1, k1) x2.

Row 24: (k1, p1) x2; k1; p9; k3; p6; k1; p4; k1; p3; k1; (p1, k1) x2.

Row 25: (k1, p1) x2; k4; (p1, k2) x2; p1; k5; p1; k1; p1; k10; (p1, k1) x2.

Row 26: (k1, p1) x2; k1; p9; k1; p7; k1; p5; k1; p3; k1; (p1, k1) x2.

Row 27: (k1, p1) x2; k4; p1; k5; p1; k7; p1; k10; (p1, k1) x2.

Row 28: (k1, p1) x2; k1; p9; k1; (p6, k1) x2; p3; k1; (p1, k1) x2.

Row 29: (k1, p1) x2; k4; p1; k7; p4; k2; p1; k10; (p1, k1) x2.

Row 30: (k1, p1) x2; k1; p9; k3; p10; k1; p4; k1; (p1, k1) x2.

Row 31: (k1, p1) x2; k5; p1; k7; p1; k4; p1; k10; (p1, k1) x2.

Row 32: (k1, p1) x2; k1; p8; k1; p13; k1; p4; k1; (p1, k1) x2.

Row 33: (k1, p1) x2; k6; p1; k10; p1; k1; p1; k9; (p1, k1) x2.

Row 34: (k1, p1) x2; k1; p8; k1; p1; k2; p9; k1; p5; k1; (p1, k1) x2.

Row 35: (k1, p1) x2; k7; p1; k11; p1; k9; (p1, k1) x2.

Row 36: (k1, p1) x2; k1; p8; k1; p11; k1; p6; k1; (p1, k1) x2.

Row 37: (k1, p1) x2; k6; p1; k12; p4; k6; (p1, k1) x2.

Row 38: (k1, p1) x2; k1; (p4, k1) x2; p3; k1; p4; k1; p2; k1; p5; k1; (p1, k1) x2.

Row 39: (k1, p1) x2; k6; p1; k1; p2; k4; p2; k2; p1; k5; p3; k2; (p1, k1) x2.

Row 40: (k1, p1) x3; k1; p7; k1; p1; k2; p8; k1; p5; k1; (p1, k1) x2.

Row 41: (k1, p1) x2; k6; p1; k11; p2; k5; p1; k3; (p1, k1) x2.

Row 42: (k1, p1) x2; k1; p2; k1; p4; k1; p1; k1; p10; k1; p6; k1; (p1, k1) x2.

Row 43: (k1, p1) x2; k6; p2; k10; p1; k2; p4; k4; (p1, k1) x2.

Row 44: (k1, p1) x2; k1; (p9, k1) x2; p2; k1; p4; k1; (p1, k1) x2.

Row 45: (k1, p1) x2; (k4, p1) x2; k7; p1; k11; (p1, k1) x2.

Row 46: (k1, p1) x2; k1; p9; k1; p1; k1; p6; k1; p5; k1; p2; k1; (p1, k1) x2.

Row 47: (k1, p1) x2; k3; p1; k3; p2; k1; p6; k3; p1; k9; (p1, k1) x2.

Row 48: (k1, p1) x2; k1; p8; (k1, p2) x3; k1; p3; k4; p2; k1; (p1, k1) x2.

Row 49: (k1, p1) x2; k10; (p1, k2) x2; p1; k3; p1; k8; (p1, k1) x2.

Row 50: (k1, p1) x2; k1; p7; k1; p3; (k1, p2) x2; k1; p9; k1; (p1, k1) x2.

Row 51: (k1, p1) x2; k9; p1; k3; p1; k2; p1; k3; p1; k8; (p1, k1) x2.

Row 52: (k1, p1) x2; k1; p7; k1; p3; k1; p2; k1; p3; k1; p8; k1; (p1, k1) x2.

Row 53: (k1, p1) x2; k9; p1; k2; p1; k4; p1; k2; p1; k8; (p1, k1) x2.

Row 54: (k1, p1) x2; k1; p8; k2; p5; k1; p2; k1; p8; k1; (p1, k1) x2.

Row 55: (k1, p1) x3; k7; p1; k2; p1; k14; (p1, k1) x3.

Row 56: (k1, p1) x3; k1; p14; k2; p7; k1; (p1, k1) x3.

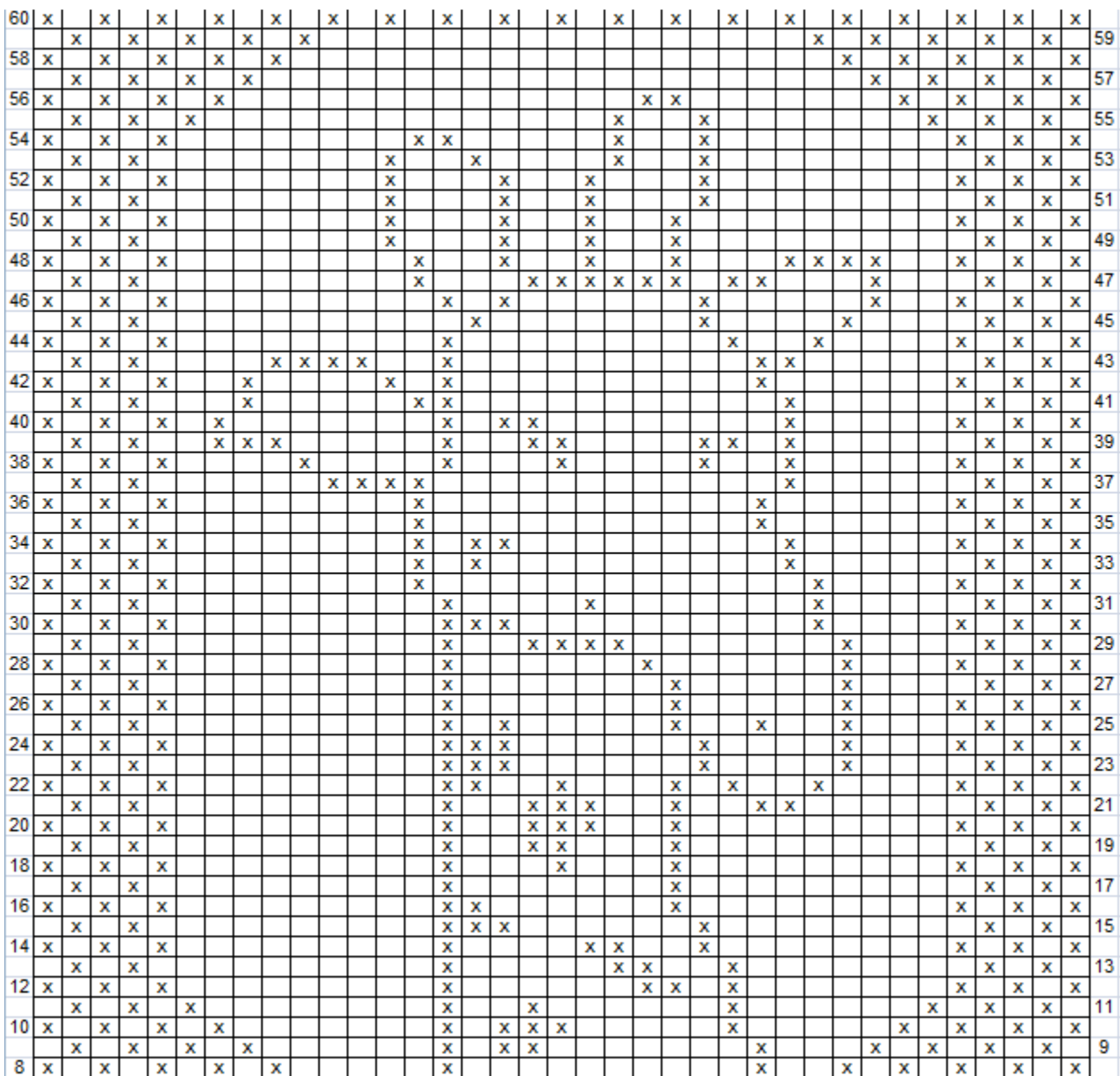
Row 57: (k1, p1) x4; k21; (p1, k1) x4.

Row 58: (k1, p1) x4; k1; p19; k1; (p1, k1) x4.

Row 59: (k1, p1) x5; k17; (p1, k1) x5.

Rows 60 - 66: k1, p1, across row.

Bind off in (k1, p1) and weave in ends.



	Knit on odd numbered rows; purl on even numbered rows
X	Purl on odd numbered rows; knit on even numbered rows

Note: This chart shows only Rows 8 – 60. Please refer to written pattern for additional rows.